



CITY OF
Port Adelaide Enfield

City of Port
Adelaide Enfield

FRINGE GUIDE 2018

* ADELAIDE
* FRINGE *

16 FEBRUARY - 18 MARCH 2018



PORT FRINGE

street party

SAT 24 FEB
5-10PM

Spend a balmy evening with artists, musos, muses, comedians, pranksters, foodies and funksters... Laugh yr face off, eat yr heart out, dance yr pants off, party yr arty parts, rock yr blues bent, have yr family fun fill!

Featuring sensational stars in the Fringe Caravan, then a stellar line up on the Big Stage and nooks and crannies of the Port. Look out for the fabulous giant puppets!

Commercial Rd (North)
and surrounds, Port Adelaide
Sat 24 Feb 5-10pm
FREE





FringeTIX

adelaidefringe.com.au
1300 621 255

#SCCFringe Artspace

A creative and imaginative market style gathering - soak in the festive, busking, street performer Fringe atmosphere, and learn a new craft!
Philip Kennedy Centre – Car Park,
477-479 Military Rd,
Largs Bay
Wed 28 Feb | 11am-2pm
FREE

Pop Up at the Port

A perfect trio of our faves - wine, music and exceptional food. All eras, vibes and music genres will be spinning while you slowly get lost in the delights of Barossa Food and Wine. \$10 charge applies for a wrist band and glass! Hosted by Lindsay Wine Estate and Bruno & George.
Hart's Mill - The Flour Shed, Mundy St, Port Adelaide
Sat 17 Feb at 11am-8pm

Conversare @ Folklore Café

Could a hosted gathering of lively spirits to participate in conversation over a fine dinner be what you're after? This can bring delight, both from what you learn about others – and about yourself? Coming along (alone is quite OK) means you will be one of the right people to contribute to convivial encounters. Hosted by Al Stewart.
Folklore Café,
11 Mundy St, Port Adelaide
Tues 27 Feb, Fri 2 Mar at 6.30pm
FP\$35 (meal included)



Flashy Fridays

Step right up to the world's first Flashy Fridays! These carnival inspired flash days will have you experiencing the most fun and edgy ways to get tattooed. Spin the wheel, pluck a duck and bottle toss are just some of the ways to win prizes and get tattooed by our world famous guest artists. Get amongst the atmosphere with live performers, food and drinks.

Black Diamond Tattoo Studio,
232 St Vincent St,
Port Adelaide
23 Feb, 2, 9 Mar 3-9pm

Port Adelaide Ghost Crime Tour

Port Adelaide is one of the oldest suburbs in Adelaide, with a nickname of 'Port Misery', it was effectively founded on 6th January 1837 and since then, has been home to countless murders and ghost sightings! Visit some of the most haunted buildings in the Port today.

**1 Commercial Rd,
Port Adelaide**
Fri-Sat 16-17, 23-24 Feb,
2-3, 9-10, 16-17, 23-24
Mar at 7.15pm
FP\$31

GLOW - Underage Rave

An underage party like no other! Immerse yourself in a club atmosphere while you groove to the hottest tracks with DJ Vyce Verso. Glow under our UV party lights and freshen up or get your shine on at our sparkle bar. This epic underage event is for teens only.

**The Parks Theatres -
Theatre One,**
46 Cowan St, Angle Park
Fri 16 Feb 7.30-11pm
FP\$20 Gr\$18

FringeTIX

adelaidefringe.com.au
1300 621 255



CHILDREN'S EVENTS

Bumbles the Clown - Magic Performed Badly Laughter Guaranteed!

The moment Adelaide's #1 clown magician Bumbles the Clown comes on stage with his sparkly nose the fun and magic starts and with the help of one lucky child in the audience a live bunny appears out of a box! Show comes with a 100% Laughter Guarantee for children (and adults!). Ages 2-12.

The Port Club,
9 Queen St, Alberton
17, 25 Feb, 3, 11 Mar 11am
FP\$15 C\$12.50 (1 adult
free ticket is valid with a
full priced child ticket)



Bumbles the Clown's Incredi- Bubble Show

The moment Adelaide's #1 Clown Magician Bumbles the Clown comes on stage wearing pencil glasses and a sparkly nose the fun and bubble magic starts. WARNING kids be prepared for fun and getting wet from all the bubbles! Comes with a 100% Laughter Guarantee!! Ages 2-12

The Port Club,
9 Queen St, Alberton
18, 24 Feb, 4, Mar at 11am
FP\$15 C\$12.50 (1 adult
free ticket is valid with a
full priced child ticket)



At the End of the Garden

A journey that follows a little caterpillar named Charlie through a magical garden. Charlie is enchanted by all of the amazing insects that she meets, like dragonfly Doc who can fly super fast. She thinks she is just a boring old caterpillar and wishes she could do cool things too. Maybe she can! Maybe we will find out at the end of the garden. Ages 4-9

The Parks Theatres –
Theatre Two,
46 Cowan St, Angle Park
Sat 24 Feb at 1pm
FP\$16 Ch\$12



Kids Disco Party

It's party time! Dance to the latest tunes with other 5-12 year olds and feel like the star of your own pop video. Parents can join the kids while they groove or grab a coffee at our cafe next door while the kids enjoy full club lighting, projection, games and more in a safe and fun environment.

The Parks Theatres –
Theatre One,
46 Cowan St, Angle Park
Mon 12 Mar at 10am
FP\$12



NINJA MANGA

Multi-lingual Ninja, Jarrod Hoare, takes you on a high-energy, family-friendly adventure, as the mysterious Manga Master transforms his silly stories into Manga Artwork, Live! What will happen? You decide! Be part of the show, from your seat or on stage! Stories, games and laughs! Every show is new! Come in a costume, get a free gift! Ages 4-12.
The Parks Theatres,
46 Cowan St, Angle Park
10 Mar at 6pm, 11 Mar at 10.30am, 12 Mar at 2pm
FP\$15 Ch\$10 Family\$40



Matty Grey's Family Fun Variety Show

Each show will be a family friendly variety fun-fest with a host of acts invited in from the broader Fringe Festival. Hosted by Enfield Hotel's favourite lunatic, Matty Grey, these nights are sure to be brilliant nights out.

Ages 5-12
Hotel Enfield –
Branson Room,
184 Hampstead Rd,
Clearview
21 Feb, 14 Mar at 6.40pm
FP\$17 C\$12 Ch\$12
Family\$50 Gr\$13



CABARET

A Refugee Sings World Songs

First employer, Cat Stevens. True story. Greek Cypriot refugee Loucas Loizou in a dazzling song cycle. Original and world songs from UK, Spain, France, Italy, Greece, USA, Ireland, Australia and Cyprus.

The British Hotel Port
Adelaide – Riverside Room
Fri 23 Feb at 8.15pm

The British Hotel Port
Adelaide – Upstairs
Function Room,
13 North Pde, Port
Adelaide (not wheelchair
accessible)

Sat 24 Feb at 8.15pm
FP\$25 C\$20 Ch\$15
Family\$60 Gr\$20

Choo and Cheek

Celebrating each and every woman feeling comfortable in their own skin, the Choo la la ladies present an intimate night of tasteful, tantalising tease! Risqué and racy dance moves teamed with sultry vocals and comedy. A show that encapsulates fun and femininity. (18+)
The Parks Theatres –
Theatre Two,
46 Cowan St, Angle Park
Sat 24 Feb at 8.30pm
FP\$28

Kabaret Kids

Be entertained by the talented kids from the award winning Parks Youth Theatre. Featuring short stories scripted by young performers and a selection of their favourite songs. You will laugh, think and feel as these young talents take their first shot at the cabaret genre.
The Parks Theatres –
Theatre Two,
46 Cowan St, Angle Park
Sat 3 Mar at 4pm
FP\$22 C\$16 Family\$60
Gr\$18

FringeTIX

adelaidefringe.com.au
1300 621 255



FringeTIX

adelaidefringe.com.au
1300 621 255

Spankin' New!

Join our award winning youth theatre seniors, as they share a glimpse into the hearts and minds of their generation through story and song. These young emerging talents will make you think, feel and smile as they share tales of hope, friendship, love and teenage angst. The Parks Theatres – Theatre Two, 46 Cowan St, Angle Park
Mon 12 Mar at 4pm
FP\$25 C\$18 Ch\$15
Family\$70 Gr\$18

Up Late and Uncut

An adults only interactive burlesque experience. Lots of comedy and old school bump and grind up close and personal at the newly opened Hades Hula House.
Hades Hula House,
52 Semaphore Rd,
Semaphore (not wheelchair accessible)
Fri-Sun 9-11 Mar 10pm-11.30pm
FP\$15

COMEDY

Comedy Cafe

In this form of comedy the humour comes from audience rather than a performer on a stage. Everyone participates in lively conversation with each other in groups around small tables, cafe style. Your host Al Stewart invites the groups to compete against each other in creating zany ideas on a range of topics. Sound intriguing and lively fun?
Mixed Creative,
32 Nile St, Port Adelaide
Thurs 8 Mar at 6.30pm
FP\$25



Granny Flaps - Hanging Out

Adelaide's dirty little secret is back and this time she's coming to you! Join the ukulele toting grandma on her latest life journey through love, lust and body parts. A night of sidesplitting comedy that will have you slipping off your seat. Just don't sing along!

The British Hotel Port
Adelaide – Riverside
Room, 13 North Pde,
Port Adelaide
Fri 2 Mar at 8pm
FP\$25 C\$20 Gr\$20

Joshua Warrior - Aboriginal Gigolo

Following a Sold Out Adelaide Fringe season in 2017, the Nunga from Down Under is back to wow the crowd with his show 'Aboriginal Gigolo'. His magical Aboriginal fusion will have you in cramps, while his loud rambunctious one liners will finish you off. (M)
The British Hotel Port
Adelaide – Riverside
Room, 13 North Pde,
Port Adelaide
Fri 16 Mar at 9.15pm
FP\$20

The Beautiful Bogan - Life's Not Fair

A tale of a man that lost his mullet and his identity. The world's most loved mullet met its tragic fate one memorable day sending The Beautiful Bogan on a one way journey of self-discovery. Find out who he is without his mane as he takes a long hard look in the mirror in this refreshingly brave story that will leave you crying tears of laughter.

The British Hotel Port
Adelaide – Riverside
Room, 13 North Pde,
Port Adelaide
Sat 24 Feb at 8pm
FP\$29.90 C\$20 Gr\$20



DANCE

Totally 80's Dance Workshop

Learn moves from the decade that brought us icons like the running man, the moonwalk, the robot and the MC Hammer dance! This fun filled workshop is open to beginners, advanced and all ages and will provide you with plenty of giggles as you pick up some hot, no-so-new moves from our experienced instructor. 80's dress optional.

The Parks Theatres –
Theatre One,
46 Cowan St, Angle Park
Sat 3 Mar at 1pm
FP\$12 C\$10 Ch\$10

Toxic - Britney Spears Dance Workshop

Join us for some hip-grinding, hair-flipping and leg-splitting Britney action in our workshop featuring the moves of the pop princess who has provided us with fly dance steps for nearly two decades now. Beginners, advanced and all ages are welcome.

The Parks Theatres –
Theatre One,
46 Cowan St, Angle Park
Mon 12 Mar at 11am
FP\$12 C\$10 Ch\$10

FringeTIX

adelaidefringe.com.au
1300 621 255

97 Tutu

A wild and wacky tutu romp through life from the very young to the very old! Presented by international performer Jenn Manders.

Mixed Creative,
32 Nile St. Port Adelaide
Wed 28 Feb, Thurs-Fri 1-2
Mar at 7.30pm
FP\$20 C\$15





MUSIC

The Port Rocks - Sun 25 Feb - FREE

Join us for 'The Port Rocks' tenth annual live music extravaganza and pub crawl! Bar hop around the Port Adelaide Heritage precinct starting with the Classic Car Show 'n' Shine Competition and Pin Up Parade. Featuring rockabilly, rock 'n' roll, folk, roots & blues, jazz bands and burlesque performers. Go to facebook.com/theportrocks for details.

North Parade Car Park
10 North Parade

Show n Shine

10am - 4pm

The British Hotel
13 North Parade

DJ Jess Mallia
Cassablanca Pin Up Parade
Raunchy Sugar

10am - 2.30pm
1.30pm - 2.30pm
2.30pm - 5.30pm

Newmarket Hotel
132 Commercial Rd

Marlene Richards

1pm - 4pm

The Dockside Tavern
130 Lipson St

Dockside All Stars
Classic Hits Band

1pm - 2.30pm
4pm - 8pm

Black Diamond Gallery
66 Commercial Rd

A.P. D'Antonio

2pm - 4pm

Korked
3 Divett St

Lil Diva

2pm - 5pm

Railway Hotel
247 St Vincent St

Chesterfield

2.30 pm - 5.30pm

Michonne
229 St Vincent St

Brendan J Williams

3pm - 5pm

The Lighthouse Wharf Hotel
1 Commercial Rd

Austin Bray

3pm - 6pm

Commercial Hotel
29 Commercial Rd

Heavy Load

3pm - 7pm

Mixed Creative
32 Nile St

Orangutang

5pm - 8pm



MUSIC

Soma - Sound Bath

An improvised performance exploring deep meditational states. Experience a live, diverse soundscape interweaving electronic sequences, synthesizer, singing bowls, voice and other instruments delving into an inner journey of harmonic healing vibrations. An interactive extension of the SOMA installation. BYO mat/ cushion.

Hart's Mill – The Flour Shed, Mundy St, Port Adelaide

Fri-Sun 2-4 Mar at 7.30pm

FP\$22 C\$18 Ch\$15

Family\$62 Gr\$20

Choirmaster and the Choristers Music

The Reggae rhythms, hip life and hi life music will thrill audiences and give them an insight into the music of modern Africa. Choirmaster is a musician whose artistic appreciation of music has endeared him to people throughout the world. Adelaide audiences, get ready to dance!

The British Hotel Port Adelaide – Riverside Room, 13 North Pde, Port Adelaide

Thurs 22 Feb at 8pm

FP\$15 C\$12 Ch\$10 Gr\$11

Gypsy Fire Electric

Amazing Czech violinist Romana Geermans and Matthew Fagan (Lord of the Strings) on ten-string Spanish and electric guitars featuring European Gypsy/Jazz, Tango, Bluegrass, Celtic, Flamenco and World Premier 'Gypsy Fire Electric' featuring Hendrix, Queen, Zepplin, Deep Purple, Beatles and ABBA classics. A tour de force show!

The British Hotel Port Adelaide – Riverside Room, 13 North Pde, Port Adelaide

Sun 4 Mar at 7.30pm

FP\$33 C\$28 Ch\$15

Family\$65 Gr\$25



Lord of the Strings! Returns

More zany virtuosic guitar, multi-genre and multi-instrumental fun, including audience requests in guitar challenge. Also see the World Premiere of Matthew Fagan's new project Electric Guitar Orchestra (EGO).
The British Hotel Port Adelaide – Riverside Room, 13 North Pde, Port Adelaide
Thurs 1 Mar at 8pm
FP\$25 C\$22 Ch\$15
Family\$50 Gr\$20

The Boat that Rocked - Satisfaction Rolling Stones Show

Dance the night away with Adelaide's hottest party boat and live acts along the Inner Harbour. 'Satisfaction – The Stones Show' will give you your 'Stones Fix'. You will be on the dance floor from the very first song till late.
(18+)
MV Dolphin Explorer, Queens Wharf, Port Adelaide
Sat 17 Feb at 7pm
FP\$45 Gr\$41.50

The Boat that Rocked - Piano Man, The Billy Joel Tribute Show

Dance the night away with Adelaide's hottest party boat and live acts on the Inner Harbour of Port Adelaide. 'Piano Man - The Billy Joel Tribute Show'. Playing all your favourite hits from 1972–Present.
(18+)
MV Dolphin Explorer, Queens Wharf, Port Adelaide
Sat 17 Mar at 7pm
FP\$45 Gr\$41.50

FringeTIX

adelaidefringe.com.au
1300 621 255

MUSIC

Scotland Abroad

The Adelaide Scottish Fiddle Club will take you on a world tour exploring Scottish-influenced tunes from places like Nova Scotia, Finland, USA and even Australia!

SA Maritime Museum,
126 Lipson St,
Port Adelaide

Thurs 22 Feb at 7pm

FP\$18 C\$12 Ch\$10

Family\$30

Blonde Bombshells of Jazz

Tribute show performed by Bonnie Lee Galea from 'Bessie Billie Dinah' & 'You Must Remember This' and Kerry Reid from 'Miss Kitty's Karavan' & 'Miss Patsy DeCline', supported by the magnificent Jazz in Cheek Quartet. Be entertained by these two vocalists claiming to be blondes for a night!

Port Dock Brewery Hotel
– City of Adelaide Room,
10 Todd St, Port Adelaide

Fri 2 Mar at 8pm

FP\$30

#64 #65 #66

Iconic Live Beatles

Kaleidoscope Eyes will perform songs from the Iconic Live Beatles shows from '64, '65 and '66 - from Adelaide's very own iconic show of '64, to the famous Shea Stadium gig in '65, to the controversial shows of The Budokan in '66. This will be a night of high energy Beatles rock and roll.

The Railway Hotel Port
Adelaide – Platform 247,
247 St Vincent St,
Port Adelaide

Sat 10 Mar at 8pm until
10pm

FP\$28 C\$25 Ch\$22

Family\$92 Gr\$26





FringeTIX

adelaidefringe.com.au
1300 621 255

Dadanii Damushi and Kusun Ensemble Concert

Kusun Ensemble is one of the best traditional bands from Ghana. Dadanii and some members of Damushi Ensemble originally started out with Kusun Ensemble. This show will be a lot of traditional music, drumming, dancing and drama.

The Parks Theatres,
46 Cowan St, Angle Park
Fri 2 Mar at 7pm, Sat 3
Mar at 7pm, Mon 12 Mar
at 4pm & 6pm
FP\$28 C\$22 Ch\$15

Mambo Italiano

Welcome to a cultural celebration loaded with traditional songs and dances from Italy! Indulge in a feast of nourishing and delicious Italian cuisine. Be immersed in passionate, romantic love songs; classic popular hits; and the wonderful sounds from a live band including the accordion.

B. Social Restaurant,
246 Fosters Rd, Oakden
Sat 17 Mar 7pm-11pm
FP\$59 (meal included)

Blues at the Fringe

The blues exists in Adelaide in all of its glorious variations. The Adelaide Roots and Blues Association is proud to present four of Adelaide's finest acts. February: One More Mile featuring Travis "Blind Dog" Taylor, supported by Ben Ford-Davies. March: Kings & Associates supported by Nikko & Snooks. Global Music Revolution Live Room, 16 /47 O.G Rd, Klemzig
Fri 16 Feb, Fri 16 Mar at
8pm
FP\$25



THEATRE

A Greek Tragedy 'Oedipus Rex – The King

An adaptation by Loucas Loizou. Sophocle's 2500 year old tragedy remains the best of all times!

"Amazing and inspiring all heartfelt" Adelaide Theatre Guide.

The British Hotel Port Adelaide – Upstairs Function Room, 13 North Pde, Port Adelaide (not wheelchair accessible)

Fri-Sat 23-24 Feb at 6.15pm

FP\$25 C\$20 Ch\$15
Family\$60 Gr\$20



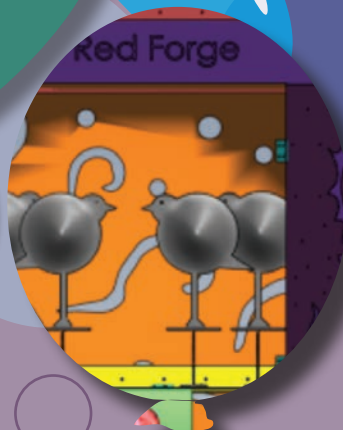
socially [un] acceptable

Have you ever been put in a socially (un)acceptable situation? Have you ever felt guilty about not having sex with someone? You're not alone. Straight from Edinburgh and Melbourne Fringe, a raw stage performance which details one woman's personal experience of sexual assault through a series of autobiographical vignettes. (18+)

The British Hotel Port Adelaide – Riverside Room, 13 North Pde, Port Adelaide

Thurs-Sun 8-11 Mar at 8pm

FP\$15 C\$10 Gr\$10



The Red Forge Publishing House

Marla tries to get 'The Red Forge Publishing House' team to promote the concept of Brenda's story about Max, an information agent from the Maxden Library, and his sister Charlotte, owner of the Theodorus Spiral Company, who together with Kesbooks Skytower, the hologram, ignore the time travel ban and try to save Hypatia. Paradoxical fun for everyone.

Semaphore Library,
14 Semaphore Rd,
Semaphore

Thurs 22 Feb at 6.30pm
(free - bookings required)

The Dockside Tavern –
Main Stage, 130 Lipson St,
Port Adelaide

Mon-Tues 26-27 Feb at
7.30pm FP\$13



A Night With The Pop Idols - Murder Mystery Dinner

The guys and girls from Sourced Up Talent present a night of murder and mystery. Join us for a cold food buffet dinner and get your detective skills ready to help us find out who killed who in this cheeky parody starring has-been pop stars and divas! The characters will make you cry, cringe and laugh, a show like no other! (18+)
The Parks Theatres – Theatre Two,
46 Cowan St, Angle Park
Sat 24 Feb at 5.30pm
FP\$35 (meal included)



Broadway Bootcamp Showcase

Be entertained by the talented kids from our January Broadway Bootcamp as they perform a showcase of the skills they have developed over our two week award winning program. Singing and dancing a selection of Broadway favourites with a splash of drama and comedy, this is sure to be uplifting and entertaining.
The Parks Theatres – Theatre One,
46 Cowan St, Angle Park
Tues 13 Feb at 7pm
FP\$25 C\$18 Ch\$15
Family\$70 Gr\$20

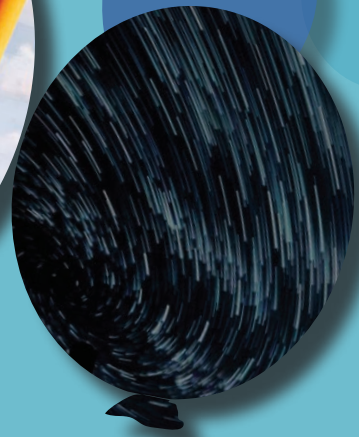


FringeTIX

adelaidefringe.com.au
1300 621 255

DOKH

Presented by Shree Kala Natya Samuha. In 1996 a political group denied the ruling parties and entered the jungle to fight against the government with arms and weapons, becoming Maoist. In the village the Maoist rebels come for a night shelter and they spend the night there. Army investigations create another problem.
The Parks Theatres – Theatre Two,
46 Cowan St, Angle Park
7-10 Mar at 8.30pm, 11 Mar at 2pm & 6pm
FP\$25



FringeTIX

adelaidefringe.com.au
1300 621 255

Edges

Who am I? Who do I want to become? Will I mess it all up? Am I being true to myself? What do I do next? Written by Tony Winners Pasek & Paul (Dear Evan Hansen, La La Land), this song cycle follows young adults at the metaphorical edge of their lives. It's about aspiring dreams and the realisation things don't always turn out quite how you imagined.

The Parks Theatres – Theatre One,
46 Cowan St, Angle Park
7-10 Mar at 7.30pm, 10-11 Mar at 2pm
FP\$35 C\$30 Gr\$32

It's Only Life - A New Musical Revue featuring John Bucchino

John Bucchino, Broadway Composer, will be in Adelaide to perform for the season of the show along with 2 brilliant local casts. With its hauntingly beautiful score, this musical revue focuses on artists and the choices they make, between their art and lives, on and off the stage.

The Parks Theatres – Theatre One,
46 Cowan St, Angle Park
20-24 Feb at 7.30pm,
24-25 Feb at 2pm, 25 Feb at 5.30pm
FP\$45 C\$42 Ch\$40
Family\$155 Gr\$40.50

Truth

A new play written by local playwright Karen Sierp, tackles contemporary social issues of consent, abuse of power and cyber bullying. Part courtroom drama and part frenetic flashbacks, 'Truth' trawls through the actions of a young man, accused of sexual misconduct. Is he guilty? Innocent? The audience will decide. It's time to face the 'Truth'.

The Parks Theatres – Theatre One,
46 Cowan St, Angle Park
Thurs-Fri 1-2 Mar at 7pm
FP\$15 C\$12 Ch\$10
Family\$50



VISUAL ART

Fez and Loathing in Las Hades

An exhibition of handmade hats and headwear, including the fez, by esteemed Adelaide hatter, Blakesby. Since launching his career, Blakesby has established himself as a fine craftsman, awarded and applauded around the globe. Always adventurous, this is a collection of new pieces aimed to encapsulate the pageantry of Tiki.

Hades Hula House,
52 Semaphore Rd,
Semaphore (not
wheelchair accessible)

OPENING Thurs 15 Feb
6pm-8pm

16-18, 21-25, 28 Feb, 1-4,
7-11, 14-18 Mar 4-10pm

PORTrayal

Port Adelaide Artists Forum members' thought provoking and beautiful exhibition about Port Adelaide. PORTrayal is a depiction of Port Adelaide's past, present and future. 2D and 3D artwork of the Port's history, people, dolphins, pelicans, mangroves, ships, sheds, architecture including some pieces with cultural and social comment.

Gallery Yampu,
1 Jenkins St, Birkenhead
(Yampu is the Kaurna word
for dolphin).

OPENING Thurs 22 Feb
6pm-8pm

Fri-Sun 23-25 Feb, 2-4,
9-11 Mar 11am-4pm

BRIDGE

Join us as we bridge time, gaps, culture and difference, connecting between two adjacent elements and between the seemingly incompatible.

The bridge of the nose, of a ship, of glasses, of a guitar; the bridge too far or too burnt, we will be bringing you our take on the word 'BRIDGE'.

From the contemporary artists who brought you the award winning series www.rustsalttar.com

Hart's Mill – The Packing
Shed, Mundy St,
Port Adelaide

OPENING Fri 23 Feb
6.30 -9.30pm

17-18, 23-25 Feb, 2-4, 9-11
Mar 11am-5pm, 1, 8 Mar
6pm-9.30pm



VISUAL ART

Soma - Body Transformation Installation

A multimedia installation and exhibition generated from the artist's self-experimentation with body transformation and biofeedback tools. Biological data is converted into visual and sonic art, producing sound representations of inner physiological changes. 'Soma' draws upon and expresses ancient spiritual and philosophical understandings of the body as divine.

Hart's Mill – The Flour Shed, Mundy St, Port Adelaide

OPENING 24 Feb 7pm-11pm

25-28 Feb, 1-4 Mar 11am-5.30pm

Keeping it Glassy

A celebration of the glass cup. Big cups, little cups, cups with patterns, coloured cups and cups that have feet. Over twenty glass artists come together to showcase their handmade cups. YO.DAN Studio, 15A Robe St, Port Adelaide (not wheelchair accessible)

OPENING Sat 24 Feb 6pm-8pm

27 Feb, 1-3, 6, 8-10, 13, 15-17 Mar 10am-4pm

SEA me

Inspired by Port Adelaide and the sea that surrounds it, 'SEA me' is an exhibition that features seascales and the bizarre and intriguing creatures that live in its deep blue depths. It showcases a colourful body of work developed by four Tutti Visual Artists based at Fontanelle.

Fontanelle Gallery & Studios – Workshop Exhibition Space, 175 St Vincent St, Port Adelaide

OPENING Sat 24 Feb 5pm-8pm

19-20, 26-27 Feb, 5-6, 12-13 Mar 1pm-3pm



Weight and Measurements

Salote Tawale was born in Suva, Fiji Islands and grew up in the South-Eastern suburbs of Melbourne. Cultural identity is a central focus in her work. The inherent conflict of being from a mixed heritage that simultaneously includes, and excludes, Tawale from a dominant post-colonial Australia is a significant consideration in her art. **Fontanelle Gallery & Studios, 175 St Vincent St, Port Adelaide**
OPENING Sat 24 Feb 6pm-9pm
25 Feb, 2-4, 9-11, 16-18, 23, 25 Mar 1pm-5pm

Synthesis

Port Community Arts Centre Members Fringe Exhibition

An eclectic collection of Port Community Arts Centre Members artworks - fabrics, mosaics, printmaking, drawing, woodwork, watercolour, ceramics, oils - explore our multi-cultural creativity. **Black Diamond Gallery, 66 Commercial Rd, Port Adelaide**
12-25 Feb 11am-4pm

Art@Heart - Analogue

Get to the heart of the matter!
A multi-culturally diverse group of secondary school Visual Arts students, from Years 8 to 12, share their visual stories through a variety of media, from analogue, hand crafting to digital and other technologies, with a youthful perspective. **Our Lady of the Sacred Heart College – Visual Arts Space, via Corralyn Tce (car park at rear of school), Enfield**
Sat 3, 10 Mar 2pm-4pm

FringeTIX

adelaidefringe.com.au
1300 621 255

VISUAL ART

Up, Up and Away with Clay!!!

Come and see our new exhibition of members' clay works...functional, quirky, decorative, thoughtful, but always engaging. Always something new and exciting. Come and enjoy our gallery space and its contents.

Pottery on Fourth,
1 Fourth Ave, Klemzig
Sat-Sun 17-18, 24-25 Feb,
3-4, 10-11, 17-18 Mar
12pm-4pm



3 Women of Clay

An exhibition of three exceptional Australian ceramic artists who all have a diverse approach to clay. View Amy Kennedy's graceful and fluid petaled forms, be inspired by the architectural splendour of Susan Robey's paper clay constructions and be intrigued and amazed with the Russian Constructivism referenced sculptures of Tatiana Gvozdetskaya.

Gallery J on Lincoln,
10 Lincoln Ave,
Manningham (not
wheelchair accessible)
Thurs-Sun 15-18, 22-25
Feb, 1-4 Mar 11am-5pm



FringeTIX

adelaidefringe.com.au
1300 621 255

For all bookings, go to
www.adelaidefringe.com.au/fringetix

Key to Ticket Types:

FP = Full Price

C = Concession

Ch = Child

FM = Fringe Member

(Gr 6+) Group 6+

Family – 2 Adult and 2 Children or 1 Adult and 3 Children

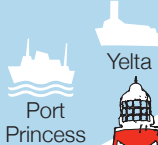
Note: All information listed was believed to be correct at time of printing.

© Produced and designed by Marketing and Communications Team,
City of Port Adelaide Enfield, 2018

Semaphore Rd

Jenkins St

GALLERY YAMPU



Pontoons

Port Princess

Yelta

Birkenhead Bridge

NORTH PDE CARPARK

Fishermen's Wharf Market



FOLKLORE CAFE

BRITISH HOTEL

North Pde



Hart's Mill



PACKING SHED

FLOUR SHED



Nile St



YO.DAN STUDIO

MIXE CREA

Robe St

RED SHA

St Vincent St

Murdy St



Mmores St

Ship St

Church Pl

Church Pl

Robe St

Robe St



Port Adelaide River



Dolphin Explorer



One & All

Falie

Karatta Dock

Warrawee Dock

Mercantile Dock

Dock 1

City of Adelaide
Clipper Ship

Free Pontoon



Disabled
Parking

Black
Diamond
Square

★ **DOCKSIDE
TAVERN**

★ **PORT DOCK
BREWERY HOTEL**

★ **LIGHTHOUSE
WHARF
HOTEL**

M SA MARITIME
MUSEUM

★ **KORKED**

★ **COMMERCIAL
HOTEL**

★ **BLACK
DIAMOND
GALLERY**

★ **JACKALOPE**

★ **RAILWAY
HOTEL**

★ **MICHONNE**

★ **BLACK
DIAMOND
TATTOO**



★ **FONTANELLE**

Police
Station



St Vincent St

Baker St

Webster St

Baker St

Port
Mall
**LIME
CK**



Supermarket



Commercial Rd

Butler St



**National Railway
Museum**

Lipson St

Godfrey St

Charlotten St

Dale St

★ **NEWMARKET
HOTEL**

↘ Railway Station



Gulf St Vincent

Largs Bay

Semaphore

Port Adelaide

Wingfield

Grand Junction Rd

PARKS THEATRE

Angle Park

Torrens Rd

Port Rd

South Rd

Adelaide Airport



PHILLIP KENNEDY



HADES HULA HOUSE

SEMAPHORE LIBRARY



PORT CLUB





For more information visit the
Visitor Information Centre
66 Commercial Rd, Port Adelaide
or phone 8405 6560

PORT FRINGE

street party

SAT 24 FEB
5-10PM

Spend a balmy evening with artists, musos, muses, comedians, pranksters, foodies and funksters!

Commercial Rd (North)
and surrounds, Port Adelaide



CITY OF
Port Adelaide Enfield

   @CityofPAE
www.portenf.sa.gov.au

