



# SALA

1-31 August 2019



CITY OF  
Port Adelaide Enfield  
[cityofpae.sa.gov.au](http://cityofpae.sa.gov.au)



# SALA

## Mayor's Foreword



It's on in PAE this August with SALA.

This year we have over 40 exhibitions, ranging across our local region.

With our culturally rich and diverse community, we aim to create a place where people love to be and provide opportunities to participate in and experience local arts and cultural activities.

To this end we continue to be an important and vibrant arts hub - home to a significant number of artists, galleries, studios, museums, cultural organisations and events.

PAE is a strong supporter of SALA, and we encourage our accomplished and emerging artists to participate in this state-wide celebration of visual arts.

A 2019 highlight is the local Port Adelaide Guide's AFTER DARK – SALA in the Port, which returns by popular demand for a third year on Friday August 9. Art lovers can follow the lantern trail to many different venues and enjoy exhibitions with tasty food, live music and the great historical Port atmosphere.

So get ready for a busy and art-filled August. Grab some friends and this guide so you can enjoy everything this world-class festival has to offer.

For full details of SALA exhibitions and events, go to [www.salafestival.com](http://www.salafestival.com)

**Claire Boan**

*Mayor City of Port Adelaide Enfield*



# COAST

## Royal South Australian Yacht Squadron Sesquicentenary Student Art Exhibition

Local school students express the themes of marine environment, recreation, sport and boating.

Royal South Australian Yacht Squadron, 161 Oliver Rogers Rd, Outer Harbor 8341 8600  
9-18 Aug Fri-Sat 10:30am-8pm,  
Sun 10:30am-2pm

## Reef

Timothy John and Peter Wallfried exhibiting paintings of the sea, reefs and nautical themes.

Royal South Australian Yacht Squadron, 161 Oliver Rogers Rd, Outer Harbour 8341 8600  
www.timothyjohnfinearts.com  
2-31 Aug Fri 6-10pm, 17 Sat Closed, Sun 10am-4pm,  
Sat 10am-10pm

## Fish Out of Water

Realistic portraits of Australian fish by Jenny Berry.

The Cruising Yacht Club of South Australia, Lady Gowrie Dr, North Haven 8248 4222  
www.jennyberryartist.com  
1 Aug - 25 Sep Thu-Fri 12-11pm,  
Sat 10am-11pm, Sun 9am-11pm

## SA Arttopia Icons

SA from 14 perspectives - Rick Clise, Brian Crossman, Gerry McMahon, Thomas Mentzel, J Eva Mitchell, Cynthia Schwertsik, Stephen Skillitzi, Jane Smeets, Geoffrey Stapleton, Lise Temple, Tim Thomson, Alex Toyne, Rosemary Warmington, Roland Weight.

Art Logic Gallery, 27 Warwick St, Largs North 0432 924 305  
4-25 Aug -Sun only 10am-4pm

## Artisan In The Mix

Cruz, Kwars, Fatso, Zest, Notus, Dest, Spook, Jamie Runjajic Bennett, Karen Walters - collective of emerging artists expressing personal ideology and perspectives.

Semaphore Ink, 118 Semaphore Rd, Semaphore 0431 101 405  
7-18 Aug Wed-Sun 10am-5pm

## Rapt

Sharon Holmes' organic, free-flowing paintings have been created using acrylic fluid pouring techniques.

Semaphore Rd Physio, 95 Semaphore Rd, Semaphore 8242 7111  
1-31 Aug Mon-Wed 8am-6pm, Thu 8am-6:30pm, Fri 8am-5pm,  
Sat 8am-12:30pm

## Feast Your Eyes

Established and emerging artists Linda B, Sue Carpenter, Ken Stephens.

Portobello Waterfront Restaurant Waterfront, 1-2 Wirra Dr, Newport 0403 203 766  
1-31 Aug Tue-Sun 12-9pm  
Opening Event Thu 8 Aug 6:30-8pm









# PORT

## SPECIAL EVENT

### After Dark - SALA in the Port

A huge collaboration of SALA exhibition launches in Port Adelaide. After Dark returns for its third year for a one-night-only event where art lovers can walk from venue to venue, lit by lanterns, enjoying the exhibitions as well as all the great food, live music and atmosphere the beautiful, historical Port has to offer.

Various venues, Port Adelaide  
<https://portafterdark.com/>  
9 Aug Fri 4-untillate

### Women Out West

Port Adelaide Artist Forum members - Vicki Crowley, Dolores 'Dolly' Henry, Kalyna Petersen, Jenny Ramos, Jane Shircore, Patricia Wozniak.

Gallery Yampu, 1 Jenkins St via Semaphore Road, Birkenhead, 0414 709 189  
16-25 Aug Fri-Sun 11am-4pm,  
16 Fri 11am-7pm  
Opening Event Thurs 15 Aug  
6:30-9pm

### Beauty in Design: Learning from Nature

Estuary Care Foundation - Peri Coleman, Alex Goad, Phill McPeake, Kym Murphy, Rebecca Phyland celebrate the beauty of nature design in the life of the Port River.

Folklore Café, Mundy St,  
Port Adelaide  
3 Aug - 1 Sep Tue-Sun 8am-4pm  
AFTER DARK Fri 9 Aug

### Fusion

Rory Brockman-Tanham's exhibition is about the discovery and melding of differing parts of the self.

The British Hotel, 13 North Pde,  
Port Adelaide 8240 2286  
1-31 Aug Mon-Sat 10am-10pm,  
Sun 10am-4pm  
AFTER DARK Fri 9 Aug

### Great Southern Waters

Donna Parker's art explores the coastline of southern Australia and Antarctica including sea creatures animals and shipwrecks.

The British Hotel, 13 North Pde,  
Port Adelaide 0400 804 540  
1-31 Aug Mon-Sat 10am-Until Late,  
Sun 10am-3pm  
AFTER DARK Fri 9 Aug  
6:30-10:30pm

### Liquid Light

Denis Smith captures the movement of light and water, creating mesmerising glass-like forms.

Urban Wellness, 16 Nile St  
Port Adelaide 0404 343 885  
1-31 Aug Thu 3-6pm, Fri  
10am-4pm, Sat 10am-1pm  
AFTER DARK Fri 9 Aug

### X PORT

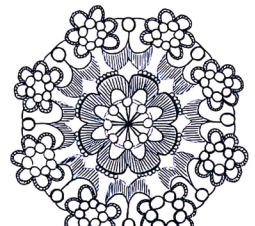
Danica Gacesa McLean and Trevor Wren documenting two decades of gradually disappearing Port Adelaide maritime heritage.

The Darkroom, 154 St Vincent St,  
Port Adelaide 0432 084 020  
10-25 Aug Sat-Sun 12-3pm  
AFTER DARK Fri 9 Aug

### Port Connection Photographic Exhibition

@itsPortAdelaide presents "In Black and White" an exhibition about people in Port Adelaide.

Red Lime Shack, 158 St Vincent St,  
Port Adelaide  
2-31 Aug Mon-Fri 8am-3pm;  
Sat 9am-2pm  
Opening Event Fri 2 Aug 5-9pm  
AFTER DARK Fri 9 Aug 6-8pm









# PORT

## **Watercolours at CK**

CK Community Hub Group's exhibition of drawings and watercolours.

CK Community Hub, 160 St Vincent St, Port Adelaide 8341 0433  
2-30 Aug Fri 12:30-3pm  
Opening Event Sun 4 Aug 12-3pm  
AFTER DARK Fri 9 Aug

## **All my friends are dead**

Steven Bellosguardo fuses contemporary techniques with a traditional approach to sculpture original subject, the human figure. Large-scale drawings made from steel.

Fontanelle Gallery & Studios,  
175 St Vincent St, Port Adelaide  
0405 611 312  
10 Aug - 15 Sep Fri-Sun 1-5pm  
Opening Event AFTER DARK Fri 9 Aug 6-8:30pm

## **GridHaus**

Danny Jarratt - Public ideology is a grid made up of lines that 'we cannot cross' and boxes we must 'stay inside of'.

Fontanelle Gallery & Studios  
175 St Vincent St, Port Adelaide  
0405 611 312  
10 Aug - 15 Sep Fri-Sun 1-5pm  
Opening Event AFTER DARK  
Fri 9 Aug 6-8:30pm

## **Synth Aesthetic**

Thomas James' intriguing and unique systematic use of colour chords and keys, in small, interrelated painterly works.

Mixed Creative, 32 Nile St, Port Adelaide 0450 551 453  
2-31 Aug Fri-Sun 12-4pm,  
Fri 6pm-12am  
Opening Event Fri 2 Aug  
6pm- Until Late  
AFTER DARK Fri 9 Aug

## **Capturing Life**

Photographer Teresa Robinson interprets the world around her through her camera lens.

The Lighthouse Wharf Hotel,  
1 Commercial Rd, Port Adelaide  
8447 1580  
1-31 Aug Mon-Sun 10am-10pm  
Opening Event Thurs 8 Aug 6-9pm  
AFTER DARK Fri 9 Aug

## **Celebration**

Port Community Arts Centre members present an eclectic mix of art works to celebrate their talent and diversity.

Black Diamond Gallery,  
66 Commercial Road,  
Port Adelaide. 0401 076 560  
4-18 Aug Mon-Sun 11am-4pm  
Opening Event Sat 3 Aug 2-4pm  
AFTER DARK Fri 9 Aug featuring  
6pm performance by 'Fixing the Blues' Junction Community Centre Choir

## **Beyond The Wharf Sheds**

UnitingSA 100 Year Celebration exhibition by clients, residents, staff, families, carers and volunteers of all ages and experiences reflecting the vision for a compassionate, respectful and just community in which all people participate and flourish.

Black Diamond Gallery,  
66 Commercial Rd, Port Adelaide  
0435 981 070  
23 Aug - 1 Sep, Mon-Sun  
10am-3pm

## **PCAC Printmaking Group**

Jenny Dupont, Ros McDougall, Lesley Gould, Kate Foster, Jenny Bryson, Heidi Rurade.

Port Adelaide Visitor Information Centre, 66 Commercial Rd, Port Adelaide 8405 6560  
1-31 Aug 9am-5pm  
AFTER SALA Fri 9 Aug

## **Mandalas by ART by Champersj**

Mandalas became Jenny Wilmot's artistic therapy while suffering from PTSD and are now her love and passion.

Commercial Hotel, 29-31 Commercial Rd, Port Adelaide  
8447 1599  
1-31 Aug Mon-Sun 12-11pm  
AFTER DARK Fri 9 Aug





# PORT



## Layered

Colourful, fun pieces created by the layering of paint using different applications by JLZ ROSE.

Korked, 3 Divett St, Port Adelaide  
0413 044 056  
2 Aug - 8 Sep Fri 4pm-12am, Sat  
5pm-12am, Sun 12-6pm  
Opening Event Fri 2 Aug 4pm-12  
AFTER DARK Fri 9 Aug

## 8 @ Jackalope

Nancy Forrester, Wendy  
Glamocak, Mandi Glynn Jones,  
Kathy Harrison, Kelli Lewis,  
Susan McKenzie, Bev Puckridge,  
Sandra Vines – eight powerful  
women artists.

Jackalope Studio Gallery, 19 Calton  
Street, Port Adelaide 8447 7785  
1-31 Aug Thu-Sun 11am-5pm  
Opening Event Sun 4 Aug 1-3pm  
AFTER DARK Fri 9 Aug

## Feminine Connections A Stitch Through Time

Karen Haskard's work is  
inspired by gorgeous lacework  
created by her Great-Grandma,  
which she has brought to  
life through her hand drawn  
artworks.

Yarn Trader, 261 St Vincent St, Port  
Adelaide 7222 0525  
1-31 Aug Tue, Thu-Sat 10am-4pm,  
Wed 10am-2pm  
Opening Event Thurs 2 Aug 5-10pm  
AFTER DARK Fri 9 Aug

## Face First

Maggie McCabe's paintings  
explore concepts of mother  
and child through their  
relationship to image, identity,  
time and attachment.

True Hemp Culture,  
257 St Vincent St, Port Adelaide  
0421 083 947  
9 Aug -6 Sep Tue-Fri 9am-4pm,  
Mon, Sat 10am-4pm  
Opening Event AFTER DARK  
Fri 9 Aug 5:30-9:30pm

## The Little Black Dress with a Twist

Nadia Caon, Janelle Gaudet, Sue  
Langhans - fabricated sculptures,  
print-based art and fantastical  
mosaic shoes.

Studio 99, 99 Lipson St,  
Port Adelaide 0412 918 059  
3-31 Aug Sat-Sun 1-5pm  
Opening Event AFTER DARK Fri 9  
Aug 5-8pm - "Wire with Whisky"

## Err, here are some paintings, ay

Figurative and abstract paintings  
and drawings in the distinctive  
geometric style of Steve Glass.

Black Diamond Tattoo, 232 St  
Vincent St, Port Adelaide  
1-31 Aug Mon-Sat 10am-5pm  
Opening Event Fri 16 Aug 5-9pm  
AFTER DARK Fri 9 Aug

## Spray Cans & Beer Cans

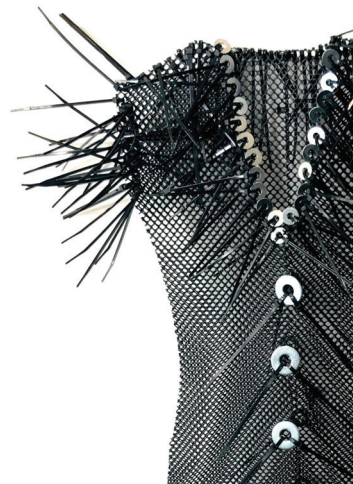
Tarns, Sairbean, Tayla Carlaw,  
Jack Fran, Zack O'Donohue  
- local street artists will display  
their art and create new pieces  
live. Closing with party and  
artwork auction.

Pirate Life Brewing,  
Baker St, Port Adelaide 8317 2111  
9-31 Aug Mon-Wed,  
Sun 11am-8pm, Thu 11am-10pm,  
Fri-Sat 11am-11pm  
Opening Event AFTER DARK  
Fri 9 Aug

## All in Bloom

Tess Leo's exhibition for flower  
and nature lovers in oil and  
mixed media.

Port Blooms, 72 Commercial Rd,  
Port Adelaide 0408 834 522  
1-31 Aug Mon-Wed, Sat 9am-5pm,  
Thu-Fri 9am-6:30pm,  
Sun 9am-12pm  
AFTER DARK Fri 9 Aug







# PORT

# NORTH/EAST

## UPSCRAP!

Nathan Modra is an upcoming artist living and working on a sheep farm who upcycles scrap metal into sculptures.

National Railway Museum, 76  
Lipson St, Port Adelaide 8341 1690  
1-31 Aug Mon-Sun 10am-4:30pm

## Imagination

Kevin Golding, Mark Lobert,  
Greer Tappert share high  
energy, creative passion.

Mark Lobert Gallery, 152 Port Rd,  
Alberton, 0414 205 393  
1-31 Aug Tue-Fri 10am-3pm,  
Sat-Sun 10am-4pm  
Opening Event Wed 31 Jul 6:30-9pm

## Chicago Peace

Kilburn community - Jackie  
Adams, Kim Bray, Anne Elliot,  
Don Fredericks, Bev Fredericks,  
Bronwyn Grundy, Peta Hatch,  
Amanda Henningsen,  
Sophie Langley, Penny Stam.

Experience Cafe at Kilburn  
Community Centre, 59 Gladstone  
Ave, Kilburn, 0479 112 188  
3-31 Aug Tue-Fri 10am-4:30pm,  
Sat 10am-1pm  
Opening Event Sat 3 Aug 2-4pm

## SALA at Hampstead

SALA Artist Cassie Thring  
engages the residents as both  
makers and explorers.

Hampstead Rehabilitation Centre,  
207-235 Hampstead Rd, Northfield,  
7074 1436  
1-31 Aug Mon-Fri 9am-5pm

## Softly the Body

Therese and Christopher  
Williams use the piano as  
a metaphor for the fragility,  
beauty and dignity of the  
human body.

Hampstead Rehabilitation Centre,  
207-235 Hampstead Rd, Northfield,  
7074 1436  
1-31 Aug Mon-Fri 9am-5pm

## Gabriel's Gallery

Students focus on identity  
and connecting with cultural  
backgrounds.

St Gabriel's Sacred Heart Centre  
(Gym), 17 Whittington St, Enfield,  
8344 0000  
28-30 Aug Wed 5-7pm,  
Fri 8:30am-4pm  
Opening Event Wed 28 Aug 5-7pm

## Down The Rabbit Hole

OLSH students' musical sets,  
props, costumes and related  
art pieces.

Our Lady of the Sacred Heart  
College - Gallery (Corralyn Terrace  
entrance), 496 Regency Rd, Enfield,  
8269 8800  
28-30 Aug Wed-Fri 3:30-6:30pm

## Seaside D'Italia

Shannon Sullivan – B&W  
images of local life at  
Italian seaside by emerging  
documentary photographer.

Pane e Latte, 587 Regency Rd,  
Broadview, 0402 511 643  
1-31 Aug Tue-Fri 7am-3pm,  
Sat-Sun 8:30am-2pm  
Opening Event Fri 2 Aug 6-10pm







# NORTH/EAST

## **Journey**

Sam Gollan's journey has taken her on a path from Ngarrindjeri land, Raukkan her home to learning Kaurna heritage.

Clipboard Art Supplies,  
105 Hampstead Rd, Manningham,  
7073 8774  
1-31 Aug Mon-Fri 10am-5:30pm,  
Sat-Sun 11am-4pm  
Opening Event Sat 3 Aug 2-4pm

## **Magic Tree Yarn Bombing**

Collective - Stefany Cooper,  
Michelle Jahn, Clare Mahony,  
Lynn Seamanve.

Hillcrest Community Centre, 27-31  
Queensborough Ave (off Fosters  
Rd), Hillcrest, 8369 0329  
2-31 Aug Tue-Fri 9am-5pm  
Opening Event Fri 2 Aug 6:30-8pm

## **Yellow is a Happy Colour**

Misia Stawinski's eclectic and whimsical children's illustrations.

Greenacres Library, 2 Fosters Rd,  
Greenacres, 8405 6584  
3-31 Aug Mon-Wed 9:30am-  
5:30pm, Thu 9:30am-8pm, Fri  
10am-5:30pm, Sat 9:30am-1pm,  
Sun 1:30-5pm  
Opening Event Sat 3 Aug 12-1pm

## **Open Studio weekend**

Studio Potters SA  
demonstrations of wheel  
throwing, handbuilding and  
decorating techniques. Market  
stalls and gallery.

Studio Potters SA, 1 Fourth Ave,  
Klemzig, 8266 2011  
10-11 Aug Sat-Sun 10am-4pm  
Opening Event Sat 10 Aug  
6:30-9pm

# WORK SHOPS

## **Open Studio Drop-in Workshops**

Fontanelle, 175 St Vincent St, Port  
Adelaide 0405 611312  
Every Sat, 11:30am-3:30pm

## **Jump Art Workshops**

Creative workshops for people  
experiencing social isolation  
and/or mental health issues.

Fontanelle, 175 St Vincent St, Port  
Adelaide Vass - Neami - 8240 2566  
Every Wed 1:30-3:30pm

## **Port Community Art Centre Workshops**

Watercolours, Ceramics,  
Children's Art, Printmaking,  
Engraving, Traditional Art,  
Life Drawing.

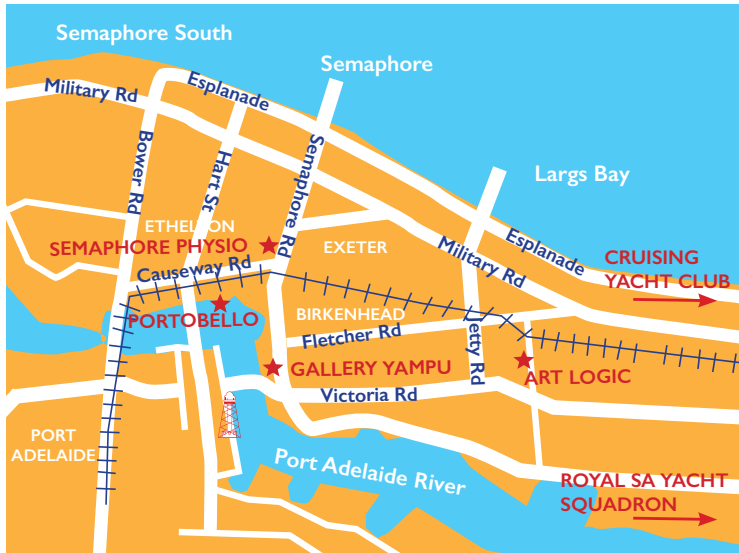
Port Community Art Centre,  
66 Commercial Rd, Port Adelaide



# NORTH/EAST



# COAST





# PORT ADELAIDE



# SALA

PORT ADELAIDE GUIDE PRESENTS

2019  
*After Dark*  
SALA IN THE PORT

FRIDAY 9TH AUGUST  
4PM UNTIL LATE



[PORTAFTERDARK.COM](http://PORTAFTERDARK.COM)



The City of Port Adelaide Enfield proudly supports artists through subsidising SALA (South Australian Living Artists) Festival registration fees for events, tours, open studios and exhibitions held within the Council area.

For further information about local attractions contact:

Port Adelaide Visitor  
Information Centre

66 Commercial Road,  
Port Adelaide

Open 7 days a week  
(closed Christmas Day)

Tel: 08 8405 6560

[visitorinfo@cityofpae.sa.gov.au](mailto:visitorinfo@cityofpae.sa.gov.au)

For further information about arts and cultural activities and projects contact:

Arts & Cultural  
Development Officer

City of Port Adelaide Enfield

163 St Vincent St, Port Adelaide

Tel: 08 8405 6600

[www.cityofpae.sa.gov.au](http://www.cityofpae.sa.gov.au)

[service@cityofpae.sa.gov.au](mailto:service@cityofpae.sa.gov.au)

Note: All information listed was believed to be correct at time of printing. The City of Port Adelaide Enfield is not responsible for the listed events or their content.



CITY OF  
Port Adelaide Enfield  
[cityofpae.sa.gov.au](http://cityofpae.sa.gov.au)